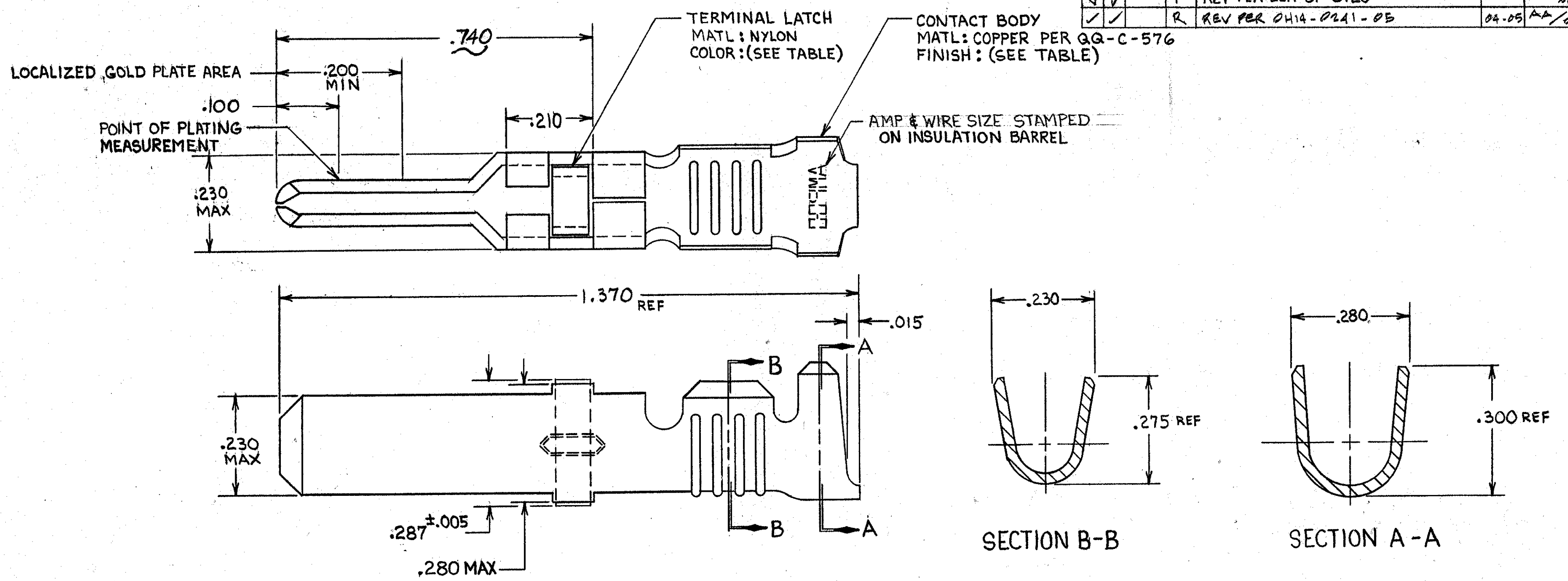


THIS DRAWING IS UNPUBLISHED; RELEASED FOR PUBLICATION  
 © COPYRIGHT 19 BY AMP INCORPORATED, HARRISBURG, PA. ALL INTERNATIONAL RIGHTS RESERVED. AMP PRODUCTS MAY BE COVERED BY U.S. AND FOREIGN PATENTS AND/OR PATENTS PENDING.

REVISIONS						
P	F	ZONE	LTR	DESCRIPTION	DATE	APPROVED
✓	✓		L	REDRAWN & REVISED PER ECN R-1451	7-30-85	REB/SLB
✓	✓		M	REV. ECN R-1946	3-4-86	MPH/SLB
✓	✓		N	OBSOLETE -3 PER R-2760	3-4-87	SDS/SLB
✓	✓		P	REV PER ECN DF-5920	11-25-88	SV/ABM
✓	✓		R	REV PER OH14-0241-05	04-05	AA/OE



- ▲ REELED FOR USE WITH STANDARD APPLICATORS.
- ▲ PLATED WITH .000100 MIN SILVER PER QQ-S-365.
- ▲ PLATED WITH .000015 MIN GOLD PER MIL-G-45204 IN THE LOCALIZED GOLD PLATE AREA, GOLD FLASH ON THE REMAINDER, OVER .000030 MIN NICKEL PER QQ-N-290.
- ▲ PLATED WITH .000030 MIN GOLD PER MIL-G-45204 IN THE LOCALIZED GOLD PLATE AREA, GOLD FLASH ON THE REMAINDER, OVER .000030 MIN NICKEL PER QQ-N-290.
- ▲ PLATED WITH .000050 MIN 93-7% TIN-LEAD ALLOY OVER .000030 MIN NICKEL PER QQ-N-290.
- 6. WIRE RANGE = 10 AWG.
- 7. INSULATION RANGE = .190 - .220 DIA.
- ▲ PLATED WITH .000050 MIN TIN PER ASTM-B-545 OVER .000030 MIN NICKEL PER QQ-N-290.

BLACK	▲	66254-6	▲	66260-5
NATURAL	▲	66254-4	▲	66260-4
BLACK	▲	<del>66254-5</del>	▲	66260-3
BLACK	▲	66254-2	▲	66260-2
BLACK	▲	66254-1	▲	66260-1
TERMINAL LATCH COLOR	FINISH	STRIP ASS'Y P/N REF	LOOSE PIECE P/N ASS'Y	

UNLESS OTHERWISE SPECIFIED DIMENSIONS ARE IN INCHES. TOLERANCES ON: DECIMALS ±.010 ANGLES ±.010	CONTRACT NO	AMP   AMP INCORPORATED Harrisburg, Pa. 17105	
	DR <i>Rich Rohrbach</i> 9-27-85		
MATERIAL	CHK <i>Larry J. Lawner</i> 10-25-85	MALE TYPE XII GROUND CONTACT LOOSE PIECE ASS'Y	
SEE CALLOUT	APPD <i>Ed. Bolach</i> 10-25-85		
FINISH	APPD <i>James E. Smith</i> 10-27-85	SIZE	FSCM NO
SEE DASH NO	DSGN APPD	C	00779
	OTHER APPD	DRAWING NO	
		66260	
		SCALE	SHEET
		NTS	